

YEAR 2014

CORE STATION 5034

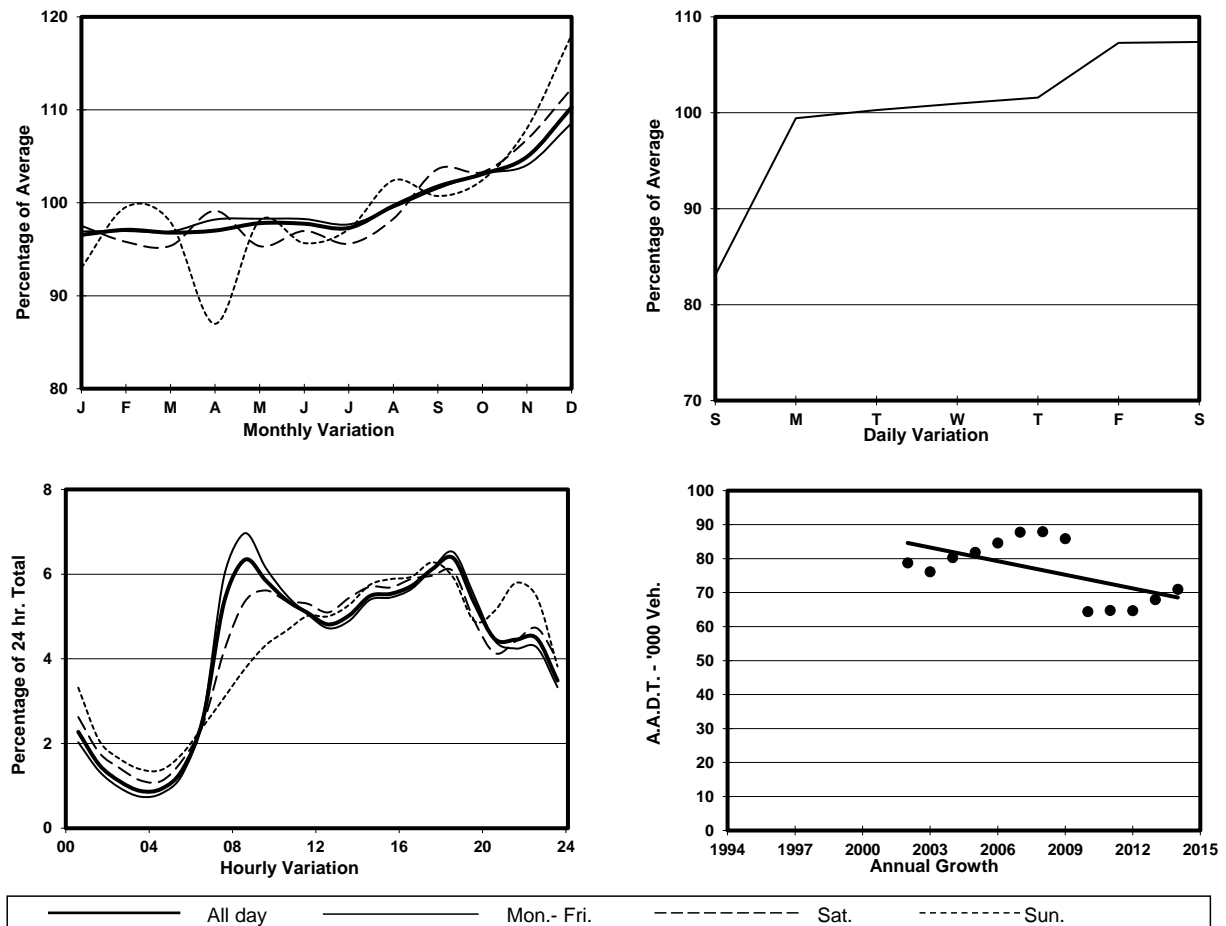
ROAD NETWORK MAJOR

ROAD TYPE EXPRESSWAY

LINK CHEUNG TSING TUNNEL & RAMBLER BRIDGE (from RAMBLER BRIDGE EASTERN END to WESTERN END OF CHEUNG TSING TUNNEL SLIP RDS TO & FROM TSING YI RD W)



## 1. TRAFFIC FLOW VARIATION AND GROWTH



## 2. TRAFFIC CHARACTERISTICS (BY DIRECTION)

| Parameter                            | All - Day | Mon. - Fri. | Sat.      | Sun.      |
|--------------------------------------|-----------|-------------|-----------|-----------|
| <b>EAST BOUND</b>                    |           |             |           |           |
| A.A.D.T.                             | 34200     | 35280       | 37140     | 28070     |
| R 12 / 24 - %                        | 71.3      | 72.8        | 69.8      | 64.2      |
| R 16 / 24 - %                        | 87.3      | 88.1        | 85.6      | 84        |
| AM Peak Hour                         | 0800-0900 | 0800-0900   | 0900-1000 | 0900-1000 |
| One-way flow at AM peak hour         | 2510      | 2860        | 2350      | 1340      |
| T - % (AM)                           | -         | 21.8        | -         | -         |
| PM Peak Hour                         | 1800-1900 | 1800-1900   | 1800-1900 | 1700-1800 |
| One-way flow at PM peak hour         | 2220      | 2330        | 2310      | 1790      |
| T - % (PM)                           | -         | 16.9        | -         | -         |
| Prop.of commercial vehicles - 16 hr. | -         | 22.2        | -         | -         |
| <b>WEST BOUND</b>                    |           |             |           |           |
| A.A.D.T.                             | 36740     | 37740       | 39830     | 31180     |
| R 12 / 24 - %                        | 63.2      | 64.3        | 61.8      | 57.9      |
| R 16 / 24 - %                        | 84.5      | 85.6        | 82.2      | 80.6      |
| AM Peak Hour                         | 0800-0900 | 0800-0900   | 0900-1000 | 0900-1000 |
| One-way flow at AM peak hour         | 1990      | 2220        | 1980      | 1230      |
| T - % (AM)                           | -         | 20.1        | -         | -         |
| PM Peak Hour                         | 1800-1900 | 1800-1900   | 1600-1700 | 1700-1800 |
| One-way flow at PM peak hour         | 2300      | 2430        | 2360      | 1930      |
| T - % (PM)                           | -         | 17          | -         | -         |
| Prop.of commercial vehicles - 16 hr. | -         | 19.7        | -         | -         |

## 3. OTHER INFORMATION AND COMMENT

**4. Vehicle classification and occupancy - Monday to Friday**

| Time                   |     | Class of vehicle |         |      |         |     |            |       |         |         |      |
|------------------------|-----|------------------|---------|------|---------|-----|------------|-------|---------|---------|------|
|                        |     | Motor            | Private | Taxi | Private | PLB | Goods veh. |       | Non     | Fr. Bus |      |
|                        |     | Cycle            | Car     |      | LB      |     | Light      | M & H | Fr. Bus | SD      | DD   |
| 0700-0800              | Pro | 3.6              | 44.0    | 16.7 | 1.2     | 0.0 | 14.8       | 11.4  | 3.4     | 0.0     | 4.9  |
|                        | Ocp | 1.1              | 1.5     | 2.2  | 5.7     | 0.0 | 1.5        | 1.1   | 24.2    | 0.0     | 68.2 |
| 0800-0900<br>Peak hour | Pro | 2.0              | 50.9    | 9.7  | 0.3     | 0.0 | 16.0       | 11.8  | 3.7     | 0.1     | 5.6  |
|                        | Ocp | 1.1              | 1.4     | 2.1  | 5.0     | 0.0 | 1.5        | 1.2   | 27.7    | 18.7    | 62.5 |
| 0900-1000              | Pro | 0.8              | 41.4    | 9.7  | 0.7     | 0.0 | 26.4       | 13.8  | 2.2     | 0.1     | 4.9  |
|                        | Ocp | 1.2              | 1.5     | 2.3  | 2.0     | 0.0 | 1.6        | 1.2   | 18.9    | 12.0    | 32.0 |
| 1000-1100              | Pro | 1.3              | 36.8    | 13.9 | 0.0     | 0.0 | 24.1       | 16.1  | 2.9     | 0.1     | 4.9  |
|                        | Ocp | 1.1              | 1.5     | 2.0  | 0.0     | 0.0 | 1.5        | 1.2   | 16.1    | 19.0    | 26.7 |
| 1100-1200              | Pro | 1.1              | 37.1    | 13.6 | 0.5     | 0.0 | 24.6       | 14.8  | 3.5     | 0.0     | 4.7  |
|                        | Ocp | 1.2              | 1.4     | 2.1  | 1.5     | 0.0 | 1.4        | 1.2   | 14.1    | 0.0     | 27.1 |
| 1200-1300              | Pro | 1.4              | 37.7    | 13.5 | 0.3     | 0.0 | 23.4       | 15.7  | 3.7     | 0.1     | 4.1  |
|                        | Ocp | 1.2              | 1.6     | 2.1  | 8.0     | 0.0 | 1.5        | 1.2   | 17.2    | 44.0    | 27.4 |
| 1300-1400              | Pro | 1.5              | 37.1    | 9.8  | 0.6     | 0.0 | 25.6       | 18.1  | 3.3     | 0.0     | 4.2  |
|                        | Ocp | 1.1              | 1.5     | 2.4  | 3.0     | 0.0 | 1.5        | 1.2   | 13.5    | 0.0     | 31.3 |
| 1400-1500              | Pro | 1.3              | 34.0    | 11.6 | 0.5     | 0.0 | 27.7       | 17.2  | 3.9     | 0.0     | 3.8  |
|                        | Ocp | 1.2              | 1.6     | 2.3  | 3.8     | 0.0 | 1.5        | 1.2   | 15.4    | 0.0     | 30.2 |
| 1500-1600              | Pro | 0.8              | 37.7    | 13.8 | 0.7     | 0.0 | 22.6       | 16.8  | 3.6     | 0.0     | 4.0  |
|                        | Ocp | 1.0              | 1.5     | 2.3  | 5.6     | 0.0 | 1.6        | 1.3   | 11.3    | 0.0     | 28.4 |
| 1600-1700              | Pro | 1.6              | 40.9    | 12.8 | 0.9     | 0.0 | 20.9       | 14.5  | 3.8     | 0.1     | 4.6  |
|                        | Ocp | 1.0              | 1.6     | 2.0  | 7.8     | 0.0 | 1.6        | 1.2   | 13.5    | 39.0    | 33.3 |
| 1700-1800              | Pro | 2.8              | 43.0    | 11.9 | 0.6     | 0.0 | 21.3       | 12.3  | 3.0     | 0.1     | 5.1  |
|                        | Ocp | 1.1              | 1.7     | 2.1  | 7.3     | 0.0 | 1.4        | 1.2   | 15.1    | 21.0    | 45.1 |
| 1800-1900              | Pro | 3.3              | 53.6    | 10.8 | 0.1     | 0.0 | 15.3       | 8.4   | 3.9     | 0.1     | 4.6  |
|                        | Ocp | 1.1              | 1.5     | 2.2  | 1.0     | 0.0 | 1.4        | 1.2   | 27.0    | 20.6    | 69.1 |
| 1900-2000              | Pro | 2.3              | 58.0    | 9.8  | 0.3     | 0.0 | 13.2       | 5.8   | 4.1     | 0.1     | 6.4  |
|                        | Ocp | 1.1              | 1.5     | 2.1  | 1.7     | 0.0 | 1.2        | 1.0   | 16.7    | 23.0    | 57.1 |
| 2000-2100              | Pro | 1.7              | 49.7    | 19.0 | 0.1     | 0.0 | 10.2       | 7.2   | 4.8     | 0.1     | 7.2  |
|                        | Ocp | 1.2              | 1.4     | 2.3  | 1.0     | 0.0 | 1.6        | 1.3   | 20.5    | 23.5    | 40.1 |
| 2100-2200              | Pro | 1.8              | 46.7    | 25.8 | 0.0     | 0.0 | 9.6        | 6.7   | 3.2     | 0.1     | 6.2  |
|                        | Ocp | 1.2              | 1.4     | 2.1  | 0.0     | 0.0 | 1.3        | 1.0   | 9.9     | 15.0    | 42.9 |
| 2200-2300              | Pro | 2.2              | 52.0    | 27.3 | 0.0     | 0.0 | 5.7        | 3.8   | 2.3     | 0.1     | 6.7  |
|                        | Ocp | 1.1              | 1.4     | 2.0  | 0.0     | 0.0 | 1.3        | 1.0   | 20.3    | 19.5    | 40.9 |
| 16 hours               | Pro | 1.9              | 43.8    | 13.5 | 0.5     | 0.0 | 19.4       | 12.4  | 3.4     | 0.1     | 5.0  |
|                        | Ocp | 1.1              | 1.5     | 2.2  | 4.8     | 0.0 | 1.5        | 1.2   | 18.3    | 20.8    | 43.5 |

**Legend**

**Pro.** Proportion of vehicles in % (Sum may not add up to 100% due to figure rounding)  
**Ocp.** Average occupancy of vehicles  
**M&H** Medium and Heavy